

JIIG~CAL Occupational Interests Guide

This questionnaire is fun to complete. It is **NOT A TEST**. There are no right or wrong answers to the questions. It is about your **INTERESTS**, and the kinds of things you might like to do in a job after you leave school.

The questionnaire is called the Occupational Interests Guide, and it is divided up into **Six Sections**. Each Section represents a number of jobs.

You don't answer the whole of the Guide but only **TWO** of these Sections.

Choosing Sections

Jobs vary a great deal. Some are easy to learn. Others are quite complicated and need a lot of training. Which kinds of jobs are you aiming for? Your choice of Sections depends on three things:-

1. What **QUALIFICATIONS** you have or think you can get.
2. How much **TRAINING YOU ARE PREPARED TO DO**.
3. What kind of **STUDY** (if any) you are willing to do, after you leave school.

Below there is a Table of Sections to help you make up your mind. Read it through and think very carefully before you choose your two Sections.

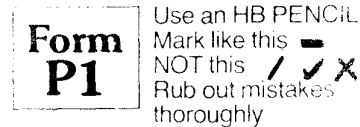
YOU MUST CHOOSE TWO TOGETHER The Sections must be next to each other, so you can choose - A & B, B & C, C & D, D & E, or E & F.

Table of Sections			
Section	Qualifications	Training	Study needed?
A	None needed	Up to about 3 months	NO
B	Not usually needed but some passes might help	2-3 months to about 1 year	NO not usually
C	O's or CSE's often asked for but you could still get some jobs without them	1 to 3 years (possibly more)	YES part of the training usually means going to college say 1 day a week
D	A number of O's would be essential	About 2-3 yrs (possibly more)	YES study (full time or part time) usually quite important
E	A's or H's would be needed in relevant subjects	About 2-4 yrs (possibly more)	YES study (full or part time) forms part of training
F	2-3 A's or 3-4 H's plus O's required. Good grades in main subjects often necessary	3 to 5 years (sometimes more)	YES you would need a degree (or equivalent qualification)

MARKING YOUR ANSWER SHEET

Once you have chosen your **TWO** Sections, you should mark them (in Pencil) on your Answer Sheet. This is called **Form P1**

You should mark it like this:-



On your Answer Sheet you will see two columns headed like this:-

First Section Second Section

Don't write anything here but on your Answer Sheet, mark **ONE** lozenge in each column to show the **TWO** Sections you have chosen. Do that now.

JIIG~CAL Occupational Interests Guide

This questionnaire is fun to complete. It is **NOT A TEST**. There are no right or wrong answers to the questions. It is about your **INTERESTS**, and the kinds of things you might like to do in a job after you leave school.

The questionnaire is called the Occupational Interests Guide, and it is divided up into **Six Sections**. Each Section represents a number of jobs.

You don't answer the whole of the Guide but only **TWO** of these Sections.

Choosing Sections

Jobs vary a great deal. Some are easy to learn. Others are quite complicated and need a lot of training. Which kinds of jobs are you aiming for? Your choice of Sections depends on three things:-

1. What **QUALIFICATIONS** you have or think you can get.
2. How much **TRAINING YOU ARE PREPARED TO DO**.
3. What kind of **STUDY** (if any) you are willing to do, after you leave school.

Below there is a Table of Sections to help you make up your mind. Read it through and think **very carefully** before you choose your two Sections.

YOU MUST CHOOSE TWO TOGETHER The Sections must be next to each other, so you can choose - A & B, B & C, C & D, D & E, or E & F.

Table of Sections			
Section	Qualifications	Training	Study needed?
A	None needed	Up to about 3 months	NO
B	Not usually needed but some passes might help	2-3 months to about 1 year	NO not usually
C	O's or CSE's often asked for but you could still get some jobs without them	1 to 3 years (possibly more)	YES part of the training usually means going to college say 1 day a week
D	A number of O's would be essential	About 2-3 yrs (possibly more)	YES study (full time or part time) usually quite important
E	A's or H's would be needed in relevant subjects	About 2-4 yrs (possibly more)	YES study (full or part time) forms part of training
F	2-3 A's or 3-4 H's plus O's required. Good grades in main subjects often necessary	3 to 5 years (sometimes more)	YES you would need a degree (or equivalent qualification)

MARKING YOUR ANSWER SHEET

Once you have chosen your **TWO** Sections, you should mark them (in **Pencil**) on your Answer Sheet. This is called **Form P1**

You should mark it like this:-



On your Answer Sheet you will see two columns headed like this:-

First Section Second Section

Don't write anything here but on your Answer Sheet, mark **ONE** lozenge in each column to show the **TWO** Sections you have chosen. Do that now.

Before you do the Guide! —

1

A word of advice

SPROG SAYS

The job with

EVERYTHING YOU LIKE



AND

NOTHING YOU DISLIKE



DOESN'T EXIST



Every job has a MIXTURE

of things you would



LIKE



NOT MIND

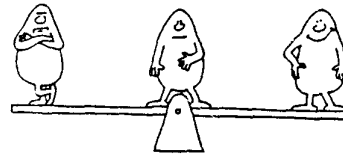


DISLIKE



2

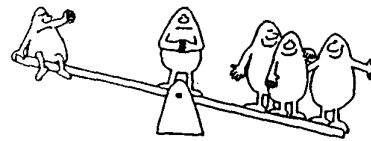
What matters is the BALANCE of



LIKES over DISLIKES

The BEST you can expect

is to find a job with MORE

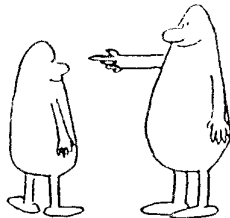


of the things you LIKE

3

SPROG SAYS

Of course a lot depends on

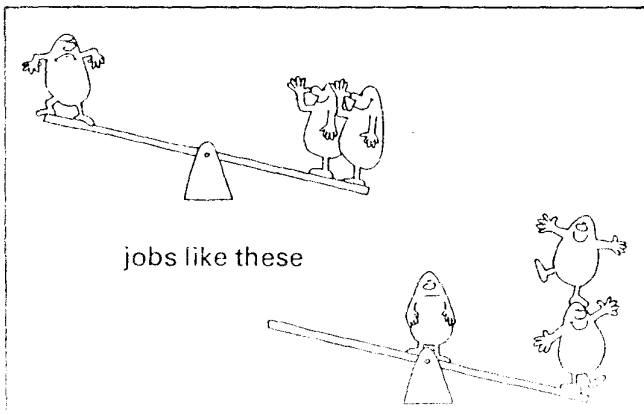


Your Attitude

If you LIKE a lot of things



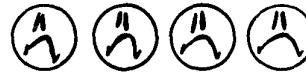
you have a better chance of finding



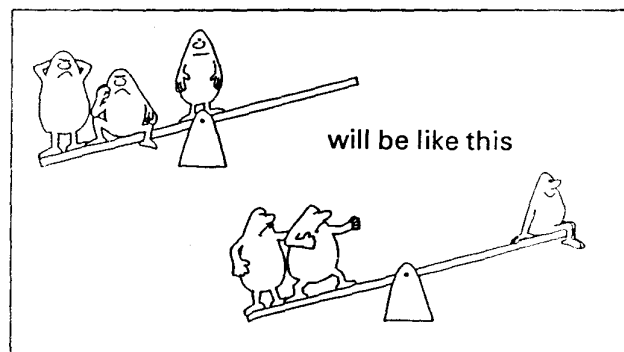
jobs like these

4

If you DISLIKE a lot of things



you are likely to find most jobs



will be like this

So when you answer the questions in the Occupational Interests Guide

Don't say DISLIKE



unless you really mean it!

If you mean LIKE



say so!

Say NOT MIND



if you feel in between

Doing the Guide

The Guide is NOT A TEST

There are no right or wrong answers to the questions. It is a questionnaire about your INTERESTS.

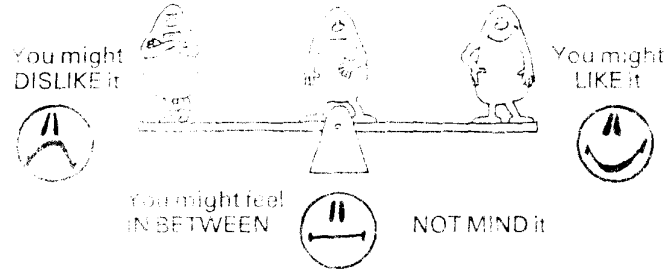
In the booklet are a number of activities; the kinds of things people do in their jobs.

They are always in PAIRS like this

Grow flowers A B
 Paint pictures A B

First

Look at each activity and decide if you would like to do that either as a job or as part of a job.



For example:-

In this pair, if you liked A and didn't mind B you would mark the boxes under the faces like this:-

Grow flowers A B
 Paint pictures A B

Next

Of the two, decide which one you would pick if you HAD to choose between them.

- Of course you might LIKE both
- or DISLIKE both
- or NOT MIND both

BUT YOU STILL HAVE TO CHOOSE A or B

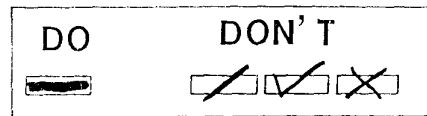
For example :-

In this pair, if you liked A you would probably choose it. Then you should mark the box beside the A like this:-

Grow flowers A B
 Paint pictures A B

Marking your Answer Sheet

It is IMPORTANT to mark your answers in the correct way.



There are three practice questions on your Answer Sheet for you to try. Do those now.

REMEMBER

DON'T SAY DISLIKE UNLESS YOU REALLY MEAN IT

PLEASE DO NOT WRITE ON THIS BOOKLET

Now

Do you understand what you have to do ? If not, ASK FOR HELP.

OK. Now turn over the pages till you come to the Sections of the Guide you have chosen, then begin.

Doing the Guide

The Guide is NOT A TEST

There are no right or wrong answers to the questions. It is a questionnaire about your INTERESTS.

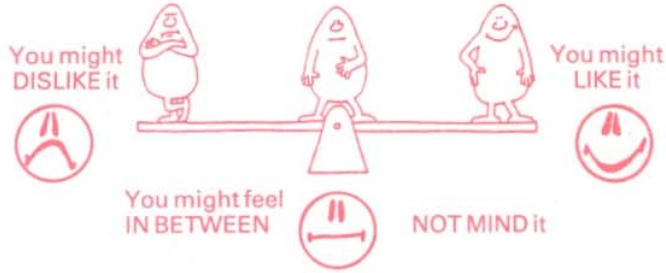
In the booklet are a number of activities; the kinds of things people do in their jobs.

They are always in PAIRS like this


 Grow flowers ----- A
 Paint pictures ----- B

First

Look at each activity and decide if you would like to do that either as a job or as part of a job.



For example:-

In this pair, if you liked A and didn't mind B you would mark the boxes under the faces like this-


 Grow flowers ----- A
 Paint pictures ----- B

Next

Of the two, decide which one you would pick if you HAD to choose between them.

- Of course you might LIKE  both
- or DISLIKE  both
- or NOT MIND  both

BUT YOU STILL HAVE TO CHOOSE A or B

For example :-

In this pair, if you liked A you would probably choose it. Then you should mark the box beside the A like this :-


 Grow flowers ----- A
 Paint pictures ----- B

Marking your Answer Sheet

It is IMPORTANT to mark your answers in the correct way.



There are three practice questions on your Answer Sheet for you to try. Do those now.

REMEMBER

DON'T SAY DISLIKE UNLESS YOU REALLY MEAN IT

PLEASE DO NOT WRITE ON THIS BOOKLET

Now

Do you understand what you have to do ? If not, ASK FOR HELP.

OK. Now turn over the pages till you come to the Sections of the Guide you have chosen, then begin.

SECTION A

YOUTHSCAN
TEST NUMBER

8

- | | | |
|-----|--|---|
| 1. | Repair holes in roads | A |
| | Lift potatoes from fields | B |
| 2. | Show people where to go at exhibitions | A |
| | Iron and press clothes at a cleaners. | B |
| 3. | Take patients to an operating theatre on a trolley | A |
| | Demolish old buildings | B |
| 4. | Put letters into envelopes ready for posting | A |
| | Put straw into animal cages in a zoo | B |
| 5. | Make beds in an old peoples home. | A |
| | Ask people for membership cards at a sports centre | B |
| 6. | Load and unload lorries | A |
| | Write labels and tie them on parcels | B |
| 7. | Grow vegetables | A |
| | Lay tables neatly | B |
| 8. | Call out numbers at Bingo games | A |
| | Dig with a pick and shovel | B |
| 9. | Mix dough for bread | A |
| | Operate a cash register in a supermarket | B |
| 10. | Tidy rooms for invalids | A |
| | Look after animals in a pet shop | B |
| 11. | Put up scaffolding for building work | A |
| | Clean silver and brass | B |
| 12. | Take money and give change in a shop. | A |
| | Do shopping for people too ill to go out | B |
| 13. | Clean out hen-houses | A |
| | Take peoples coats at a cloakroom | B |
| 14. | Set out goods on display shelves. | A |
| | Carry luggage for elderly people | B |
| 15. | Sell tickets at a railway station | A |
| | Hand out locker keys at a swimming pool. | B |
| 16. | Take out weeds from flower beds | A |
| | Push a wheelbarrow on a building site | B |
| 17. | Alter hems on coats and jackets | A |
| | Take people up in a lift | B |
| 18. | Fill up cars with petrol and oil | A |
| | Take people in wheelchairs out for walks | B |
| 19. | Cut grass | A |
| | Count packets on store shelves. | B |
| 20. | Tell people on trains when meals will be served. | A |
| | Help disabled children to dress themselves | B |
| 21. | Check parking meters in a street | A |
| | Stack crates in a warehouse | B |
| 22. | Set out salads nicely on a plate | A |
| | Put brand marks on sheep with coloured dye | B |
| 23. | Empty dustbins | A |
| | Show customers how to use a launderette | B |
| 24. | Work a machine to print addresses | A |
| | Fold and pack clothes in boxes to go to shops. | B |
| 25. | Feed farm animals | A |
| | Serve tea in a hostel for homeless people. | B |
| 26. | Polish furniture | A |
| | Oil and grease machines. | B |
| 27. | Play games with sick children | A |
| | Stick price labels on goods in a shop | B |
| 28. | Open doors for people at a museum | A |
| | Trim hedges | B |
| 29. | Feed patients who can't feed themselves | A |
| | Wrap gifts in a store. | B |
| 30. | Call taxis for guests at hotels. | A |
| | Sell newspapers. | B |

SECTION B

YOUTHSCAN
TEST NUMBER

8

- | | | |
|-----|--|---|
| 1. | Clean and repair stonework on buildings | A |
| | Spray fertilisers on crops | B |
| 2. | Show parties of visitors round a factory. | A |
| | Model new clothes | B |
| 3. | Keep an eye on children in a playground | A |
| | Fight fires | B |
| 4. | Type and send out bills | A |
| | Milk cows | B |
| 5. | Visit old people who need help at home | A |
| | Introduce records at a discotheque | B |
| 6. | Lay paving stones. | A |
| | Sort letters to be delivered by postmen | B |
| 7. | Water seeds growing in a greenhouse | A |
| | Measure and make curtains | B |
| 8. | Tell people where to wait for appointments | A |
| | Drive a lorry | B |
| 9. | Print patterns on cloth. | A |
| | Add up money taken in at a counter | B |
| 10. | Supervise mealtimes in a children's home | A |
| | Care for newborn lambs | B |
| 11. | Repair railway tracks | A |
| | Inspect samples of cloth for faults | B |
| 12. | Operate a duplicating machine in an office | A |
| | Rescue people | B |
| 13. | Groom horses at a stable | A |
| | Direct people to the right counters at a store | B |
| 14. | Cut and stitch leather to make belts. | A |
| | Help injured people into ambulances | B |
| 15. | Issue tickets for air flights | A |
| | Get people to take part in holiday camp activities | B |
| 16. | Herd sheep | A |
| | Cut wood with a circular saw. | B |
| 17. | Put make-up on actors and actresses | A |
| | Announce guests at a wedding reception | B |
| 18. | Repair dents and holes in car bodies | A |
| | Look out for swimmers in difficulty at a pool | B |
| 19. | Plant flower bulbs in parks and gardens | A |
| | Give out leaflets at a travel agents | B |
| 20. | Chat to customers while serving at a bar | A |
| | Mind children for working mothers. | B |
| 21. | File letters into folders. | A |
| | Mind a machine in an engineering factory. | B |
| 22. | Match pieces of hair and make wigs | A |
| | Clear land of weeds ready for planting | B |
| 23. | Drive a bus or taxi. | A |
| | Answer peoples questions at an information desk | B |
| 24. | Check customer's orders at a cleaners | A |
| | Bake buns and cakes | B |
| 25. | Breed birds for sale | A |
| | Help people stranded by floods | B |
| 26. | Make lampshades | A |
| | Dig up roads with a drill | B |
| 27. | Take a mobile shop round hospital wards. | A |
| | Make lists of goods stored in a warehouse | B |
| 28. | Meet visitors to an office and give them directions. | A |
| | Protect animals and plants on a country estate | B |
| 29. | Wash hospital patients and help them to dress | A |
| | Mount pictures in frames | B |
| 30. | Demonstrate goods in a showroom. | A |
| | Weigh food in a shop | B |

SECTION C

YOUTHSCAN
TEST NUMBER

8

- | | | |
|-----|---|---|
| 1. | Cut and fit glass for windows | A |
| | Shear sheep | B |
| 2. | Give advice at exhibition stands | A |
| | Arrange window displays | B |
| 3. | Care for handicapped children to give parents a holiday | A |
| | Build walls with bricks | B |
| 4. | Make up wage packets. | A |
| | Buy farm animals at markets. | B |
| 5. | Deal with emergency calls and send help | A |
| | Perform in a variety concert | B |
| 6. | Repair farm machinery | A |
| | Prepare bills for goods sold at a warehouse. | B |
| 7. | Spray fruit trees and bushes to prevent disease | A |
| | Paint stage scenery | B |
| 8. | Answer telephone enquiries at an advice bureau | A |
| | Plaster walls and ceilings | B |
| 9. | Cut cloth to be sewn into suits | A |
| | Make up orders and accounts for a mailing firm. | B |
| 10. | Cope with children taken ill at school | A |
| | Grow vegetables in a market garden | B |
| 11. | Install electric wiring | A |
| | Arrange displays of flowers | B |
| 12. | Count money to be handed in at a bank | A |
| | Give first aid to people injured in accidents | B |
| 13. | Recognise sickness in dairy cows and call in a vet. | A |
| | Give city visitors information on events of interest. | B |
| 14. | Cover old chairs with new material | A |
| | Take care of invalids throughout the night | B |
| 15. | Write shorthand. | A |
| | Announce events at sports meetings | B |
| 16. | Train and exercise greyhounds. | A |
| | Dismantle and repair car gear boxes | B |
| 17. | Hang paintings in an art gallery | A |
| | Meet and welcome people staying at hotels. | B |
| 18. | Plumb in baths and showers | A |
| | Look after patients at a dentist's surgery | B |
| 19. | Assist a vet with the treatment of small animals. | A |
| | Work out shift timetables at a factory | B |
| 20. | Stop people and ask their opinions for surveys | A |
| | Help people whose relatives have died | B |
| 21. | Type letters. | A |
| | Fix slates on roofs. | B |
| 22. | Display sets of costumes for a show | A |
| | Take charge of the harvesting of farm crops. | B |
| 23. | Weld steel girders for roof supports | A |
| | Show people round historical buildings. | B |
| 24. | Work out the cost of posting parcels | A |
| | Draw and colour maps. | B |
| 25. | Take cuttings of shrubs for transplanting | A |
| | Teach road safety to young children | B |
| 26. | Decorate cakes with icing | A |
| | Lay wooden floors for houses | B |
| 27. | Deliver meals to old people | A |
| | Check reports for typing errors. | B |
| 28. | Sort out travel difficulties for tourists | A |
| | Raise chickens and ducks | B |
| 29. | Train patients to walk with crutches | A |
| | Make hats | B |
| 30. | Greet passengers boarding aeroplanes | A |
| | Make business appointments for a manager. | B |

SECTION D

YOUTHSCAN
TEST NUMBER

8

- | | | |
|-----|--|---|
| 1. | Dismantle and repair cameras | A |
| | Identify chemicals in samples of soil | B |
| 2. | Report events of interest in a local newspaper. | A |
| | Draw film cartoons | B |
| 3. | Fit people with artificial legs and arms | A |
| | Plan the best arrangement of machines in a factory | B |
| 4. | Set up a filing system for an office | A |
| | Grow plants from seed in nurseries. | B |
| 5. | Help with the treatment and cure of drug addicts | A |
| | Lead discussion groups | B |
| 6. | Maintain and repair a ship's engines | A |
| | Inspect passports at docks and ports | B |
| 7. | Cultivate tropical plants in a botanical garden | A |
| | Design wallpaper | B |
| 8. | Answer questions about exhibits in a museum | A |
| | Conduct tests on radar equipment | B |
| 9. | Make special costumes for films and stage shows | A |
| | Arrange loans for people buying houses | B |
| 10. | Organise play activities for disturbed children | A |
| | Analyse the fat content of milk samples. | B |
| 11. | Tune racing car engines | A |
| | Create pictures for advertisements | B |
| 12. | Keep accounts and give out money at a bank | A |
| | Train deaf children to use sign language | B |
| 13. | Organise the planting of a forest | A |
| | Write leaflets describing places of interest. | B |
| 14. | Make and repair gold jewellery | A |
| | Run dances for hospital patients | B |
| 15. | Supervise clerks in an office | A |
| | Perform in advertising films | B |
| 16. | Manage the feeding and care of animals | A |
| | Check the progress of work on bridge construction | B |
| 17. | Carve sculpture | A |
| | Escort groups of visitors from overseas. | B |
| 18. | Build hi-fi equipment | A |
| | Encourage people suffering from depression | B |
| 19. | Identify blood groups in a laboratory | A |
| | Take notes of committee meetings | B |
| 20. | Act in plays. | A |
| | Look into complaints of cruelty to children | B |
| 21. | Calculate interest on savings accounts | A |
| | Repair faults in television sets | B |
| 22. | Design prints for textiles. | A |
| | Run a farm | B |
| 23. | Make technical drawings in an engineering firm | A |
| | Introduce acts at variety shows. | B |
| 24. | Work out currency exchange rates | A |
| | Make pottery | B |
| 25. | Care for birds affected by oil pollution | A |
| | Nurse mentally ill people | B |
| 26. | Plan and cut out paper patterns for clothes | A |
| | Direct site work for new roadways | B |
| 27. | Train disabled people to play sports | A |
| | Calculate peoples wages and salaries. | B |
| 28. | Read aloud to an audience. | A |
| | Estimate the age of fish from their scales | B |
| 29. | Persuade a firm to employ a blind person. | A |
| | Engrave designs on silver ornaments. | B |
| 30. | Organise entertainment for hotel guests | A |
| | Explain and sell insurance policies | B |

SECTION E

YOUTHSCAN
TEST NUMBER

8

- | | | |
|-----|--|---|
| 1. | Work out flight speeds and routes for aircraft | A |
| | Advise on choice of plants and trees for public parks | B |
| 2. | Make up headlines for newspaper reports. | A |
| | Improve the style and appearance of household goods. | B |
| 3. | Visit sick and elderly people in a parish | A |
| | Draw up plans for building ships | B |
| 4. | Manage a branch of a bank | A |
| | Dissect plants and study their structure | B |
| 5. | Provide a happy home environment for children in care | A |
| | Write magazine articles | B |
| 6. | Apply maths to solving problems of traffic flow | A |
| | Catalogue information in a Government office. | B |
| 7. | Give advice on methods of pest control. | A |
| | Design covers for records | B |
| 8. | Audition people for parts in a play | A |
| | Make calculations for designing bridges | B |
| 9. | Do engravings on glass | A |
| | Arrange for the insurance of ships and aeroplanes. | B |
| 10. | Find foster parents for children. | A |
| | Control the spread of diseases in cattle | B |
| 11. | Design car engines | A |
| | Train people to carve sculpture in wood | B |
| 12. | Estimate the value of houses. | A |
| | Give guidance to people whose marriages are breaking up. | B |
| 13. | Test food for the presence of harmful bacteria. | A |
| | Research information for documentaries | B |
| 14. | Create new ideas for jewellery | A |
| | Arrange welfare benefits for families in need | B |
| 15. | Estimate the potential market for a new product. | A |
| | Announce programmes on radio | B |
| 16. | Breed fish on a fish farm. | A |
| | Locate and correct faults in computers | B |
| 17. | Plan colour schemes for hotel interiors | A |
| | Write the wording for advertisements. | B |
| 18. | Conduct performance tests on diesel engines | A |
| | Calm down a disturbed mental patient | B |
| 19. | Develop chemicals for eliminating poisonous plants | A |
| | Organise advertising campaigns | B |
| 20. | Direct actors and actresses rehearsing films. | A |
| | Train people to overcome speech defects | B |
| 21. | Sort out disputes between management and workers | A |
| | Test the strength of metals for use in industry. | B |
| 22. | Draw and paint illustrations for books | A |
| | Study methods of improving fruit harvests | B |
| 23. | Inspect buildings for faults and defects | A |
| | Introduce speakers at a public meeting | B |
| 24. | Monitor office accounts at regular intervals | A |
| | Create new fashion styles | B |
| 25. | Advise farmers on suitable crops for different soils | A |
| | Persuade a landlord not to raise an old person's rent | B |
| 26. | Plan a range of curtain materials | A |
| | Design machinery for processing gas | B |
| 27. | Advise people wanting to adopt babies | A |
| | Discuss and agree sales targets with managers | B |
| 28. | Interview people on television | A |
| | Analyse water supplies to check for pollution | B |
| 29. | Help ex-prisoners to find jobs | A |
| | Design uniforms | B |
| 30. | Report international news events | A |
| | Give people advice on buying and selling property | B |

SECTION F

YOUTHSCAN
TEST NUMBER

8

- | | | |
|-----|--|---|
| 1. | Do research on new ways of producing energy | A |
| | Study the causes of diseases. | B |
| 2. | Take part in debates. | A |
| | Design a series of postage stamps | B |
| 3. | Help children with learning difficulties | A |
| | Study the structure of atoms | B |
| 4. | Reorganise a factory to improve production. | A |
| | Plan the development of a forest area | B |
| 5. | Look into the reasons for children playing truant | A |
| | Read scripts for books and decide which to publish | B |
| 6. | Develop processes for extracting chemicals from coals. | A |
| | Check accounts for suspected fraud. | B |
| 7. | Collect and preserve plant specimens. | A |
| | Plan the restoration of a cathedral | B |
| 8. | Decide which items should be printed in a newspaper | A |
| | Observe stars with a radio telescope | B |
| 9. | Plan a course for students at an art college | A |
| | Estimate the risks involved in insurance schemes | B |
| 10. | Help under-privileged people with their legal problems | A |
| | Advise farmers on problems of rearing animals | B |
| 11. | Calculate orbital heights and speeds for satellites | A |
| | Draw design styles for houses | B |
| 12. | Interpret statistics on imports and exports. | A |
| | Teach handicapped children | B |
| 13. | Analyse blood specimens for bacteria. | A |
| | Write a novel | B |
| 14. | Study the painting techniques used by artists | A |
| | Organise training schemes for the disabled | B |
| 15. | Prepare graphs of production and sales figures | A |
| | Plan a TV current affairs programme | B |
| 16. | Go on expeditions to find rare species | A |
| | Apply mathematics to the design of aeroplanes | B |
| 17. | Plan and carve sculpture for new buildings | A |
| | Write scripts for radio programmes. | B |
| 18. | Work on developing new metal alloys | A |
| | Organise aid for people affected by disasters | B |
| 19. | Estimate the age of rocks from fossil contents. | A |
| | Prepare cases for companies in legal disputes. | B |
| 20. | Review plays | A |
| | Investigate the causes and treatment of delinquency | B |
| 21. | Arrange foreign government contracts for exporters | A |
| | Conduct experiments with electricity and magnetism | B |
| 22. | Design stained glass windows | A |
| | Diagnose and treat animal diseases. | B |
| 23. | Devise specialised electronic equipment | A |
| | Collect and preserve documents of national interest | B |
| 24. | Negotiate sales contracts for businesses | A |
| | Paint portraits. | B |
| 25. | Breed sheep with better quality wool | A |
| | Run a campaign to improve bad housing areas | B |
| 26. | Plan costumes and scenery for opera companies | A |
| | Supervise the design and construction of dams | B |
| 27. | Prepare reports on children appearing before courts | A |
| | Manage a large manufacturing company | B |
| 28. | Give talks and lectures. | A |
| | Trace the migration routes of birds | B |
| 29. | Diagnose and treat mental illnesses | A |
| | Restore and preserve works of art | B |
| 30. | Translate books and articles into English | A |
| | Draw up wills for clients | B |

SECTION F

YOUTHSCAN
TEST NUMBER

8

- | | | |
|-----|--|---|
| 1. | Do research on new ways of producing energy | A |
| | Study the causes of diseases. | B |
| 2. | Take part in debates. | A |
| | Design a series of postage stamps | B |
| 3. | Help children with learning difficulties | A |
| | Study the structure of atoms | B |
| 4. | Reorganise a factory to improve production. | A |
| | Plan the development of a forest area | B |
| 5. | Look into the reasons for children playing truant | A |
| | Read scripts for books and decide which to publish | B |
| 6. | Develop processes for extracting chemicals from coals. | A |
| | Check accounts for suspected fraud. | B |
| 7. | Collect and preserve plant specimens. | A |
| | Plan the restoration of a cathedral | B |
| 8. | Decide which items should be printed in a newspaper | A |
| | Observe stars with a radio telescope | B |
| 9. | Plan a course for students at an art college | A |
| | Estimate the risks involved in insurance schemes | B |
| 10. | Help under-privileged people with their legal problems | A |
| | Advise farmers on problems of rearing animals | B |
| 11. | Calculate orbital heights and speeds for satellites | A |
| | Draw design styles for houses | B |
| 12. | Interpret statistics on imports and exports. | A |
| | Teach handicapped children | B |
| 13. | Analyse blood specimens for bacteria. | A |
| | Write a novel | B |
| 14. | Study the painting techniques used by artists | A |
| | Organise training schemes for the disabled | B |
| 15. | Prepare graphs of production and sales figures | A |
| | Plan a TV current affairs programme | B |
| 16. | Go on expeditions to find rare species | A |
| | Apply mathematics to the design of aeroplanes | B |
| 17. | Plan and carve sculpture for new buildings | A |
| | Write scripts for radio programmes. | B |
| 18. | Work on developing new metal alloys | A |
| | Organise aid for people affected by disasters | B |
| 19. | Estimate the age of rocks from fossil contents. | A |
| | Prepare cases for companies in legal disputes. | B |
| 20. | Review plays | A |
| | Investigate the causes and treatment of delinquency | B |
| 21. | Arrange foreign government contracts for exporters | A |
| | Conduct experiments with electricity and magnetism | B |
| 22. | Design stained glass windows | A |
| | Diagnose and treat animal diseases. | B |
| 23. | Devise specialised electronic equipment | A |
| | Collect and preserve documents of national interest | B |
| 24. | Negotiate sales contracts for businesses | A |
| | Paint portraits. | B |
| 25. | Breed sheep with better quality wool | A |
| | Run a campaign to improve bad housing areas | B |
| 26. | Plan costumes and scenery for opera companies | A |
| | Supervise the design and construction of dams | B |
| 27. | Prepare reports on children appearing before courts | A |
| | Manage a large manufacturing company | B |
| 28. | Give talks and lectures. | A |
| | Trace the migration routes of birds | B |
| 29. | Diagnose and treat mental illnesses | A |
| | Restore and preserve works of art | B |
| 30. | Translate books and articles into English | A |
| | Draw up wills for clients | B |